



## Plan of Study: 2019-2020

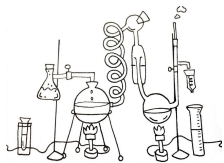
	9th Grade	10th Grade	11th Grade	12th Grade
<b>Science</b>	STEM Biology	STEM Chemistry	AP Physics I or Physics I	AP Chemistry, AP Biology, AP Physics C, AP Env Sci
<b>STEM Elective</b>	Scientific Research I	Scientific Research II	AP Seminar STEM	AP Research STEM
<b>Math</b>	Accel. Alg. I/Geo OR Accel. Geo./Alg. II	Accel. Geo./Alg. II OR AP Statistics	Accelerated Pre-Calculus	AP Calculus
<b>English</b>	9th Grade Gifted or CP English	10th Grade Gifted or CP English	American Literature OR AP Language	English
<b>Social Studies</b>	Elective OR AP Human Geog.	World History OR AP World History	US History OR AP US History	Econ & Government OR AP Government
<b>Pathway Elective</b>	Foundations of Engineering, Intro to Healthcare, OR Intro. Digital Tech	Engineering Concepts, Essentials to Healthcare, OR AP Computer Sci Principles	Engineering Application, Allied Healthcare, OR AP Computer Science	Internship or WBL
<b>Other Elective</b>	Health/PE	Fine Arts or World Language	Fine Arts, or World Language, or AP Course, or WBL	Fine Arts, or World Language, or Economics, or AP Course, or WBL

Students must take three years of a CTE Pathway in one of the following areas: Healthcare, Computer Science, or Engineering.

Students will take 4 years of research-based courses: Scientific Research I, Scientific Research II, AP Seminar, and AP Research.

**Apply for the STEM Program online, MARCH 4 - 8**

WHS Website > Student Resources > STEM Program > 19-20 Application



# STEM Mission

**The mission of the Whitewater High School STEM Program is to provide an engaging and challenging learning environment in Science, Technology, Engineering, and Mathematics.**

**STEM encourages students to use critical thinking skills and collaboration to explore the challenges of their world.**

**STEM provides opportunities to be engaged in a learning process that exposes students to a wide variety of skills and scientific concepts.**

**STEM requires students to learn by doing.**